

Welding positioner PRO 3

Welding positioner for turning and tilting with a 60 mm hollow shaft

Item no: 71801116



Features

- Tilting and clamping from 0° to 90°.
- Start/stop via location-independent foot switch.
- Rotating direction adjustable: cw/ccw.
- Rotating time adjustable.
- 60 mm hollow shaft.
- Table diameter: 340 mm. The surface is chrome-plated as a protection against weld spatters.
- Table speed adjustable from 0,6 – 6 rpm.
- Welding machine can be actuated via turntable control.
- Mass contact transmits 300A/100%.
- Turntable and control are separated.
- HF-protected.



Model	PRO 3
Supply voltage	AC 230 V/50 Hz
Ground connection	300 A/100 %
Tilting range	0° - 90°
Table diameter	340 mm
Speed	0,6 - 6 rpm
Rotating directions	cw / ccw
Max. load A	290 kg
Max. load B	190 kg
Hollow shaft	60 mm
Weight	62 kg
Item no.	71801116

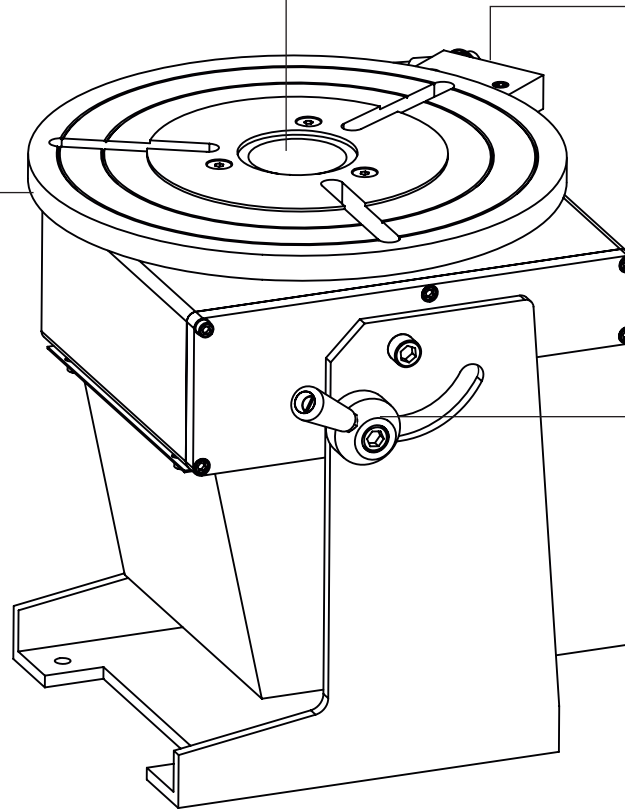
Welding positioner PRO 3

Internal diameter 60mm.
Pass through holes

The table is electroplated, it
is not apt to stick dregs.

All right use of two sides of
the table.

Level nick and the standard
lathe uses the 9" 3- chuck
flange.



Carbon brush electric
conduction, the copper alloy
outer cover dispels the heat.

The screw locks the regular
angle. Table angle range :
-5° to 95°

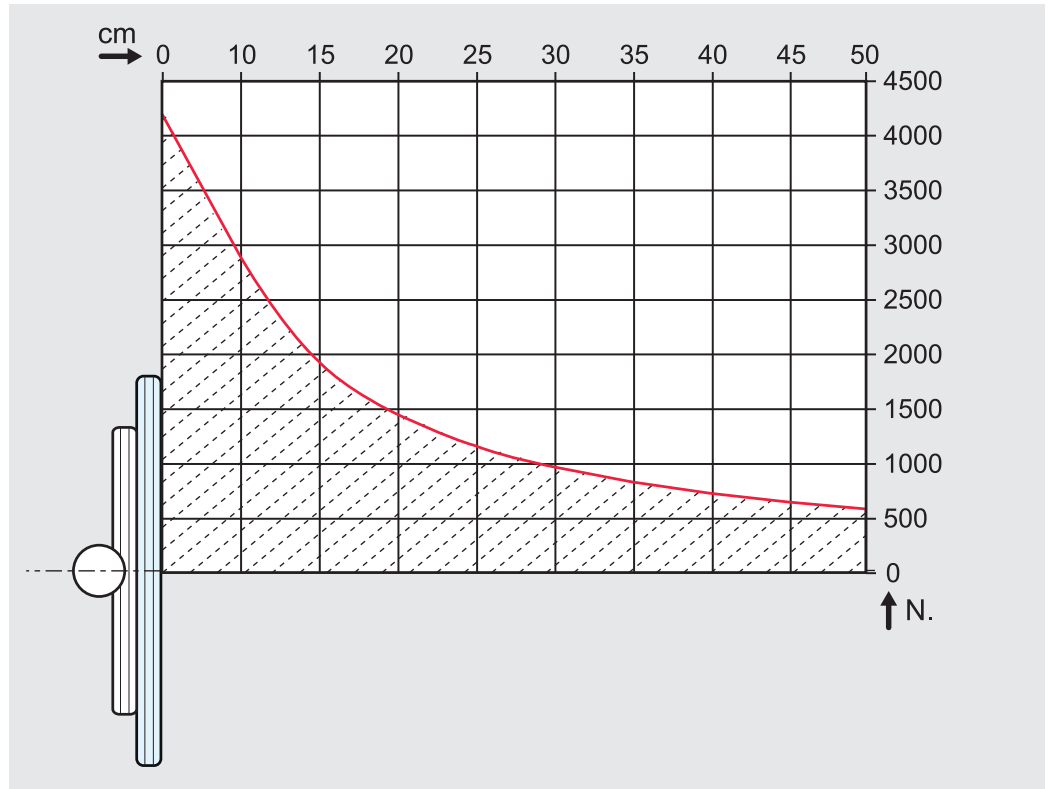
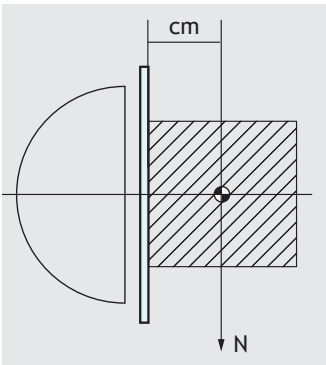
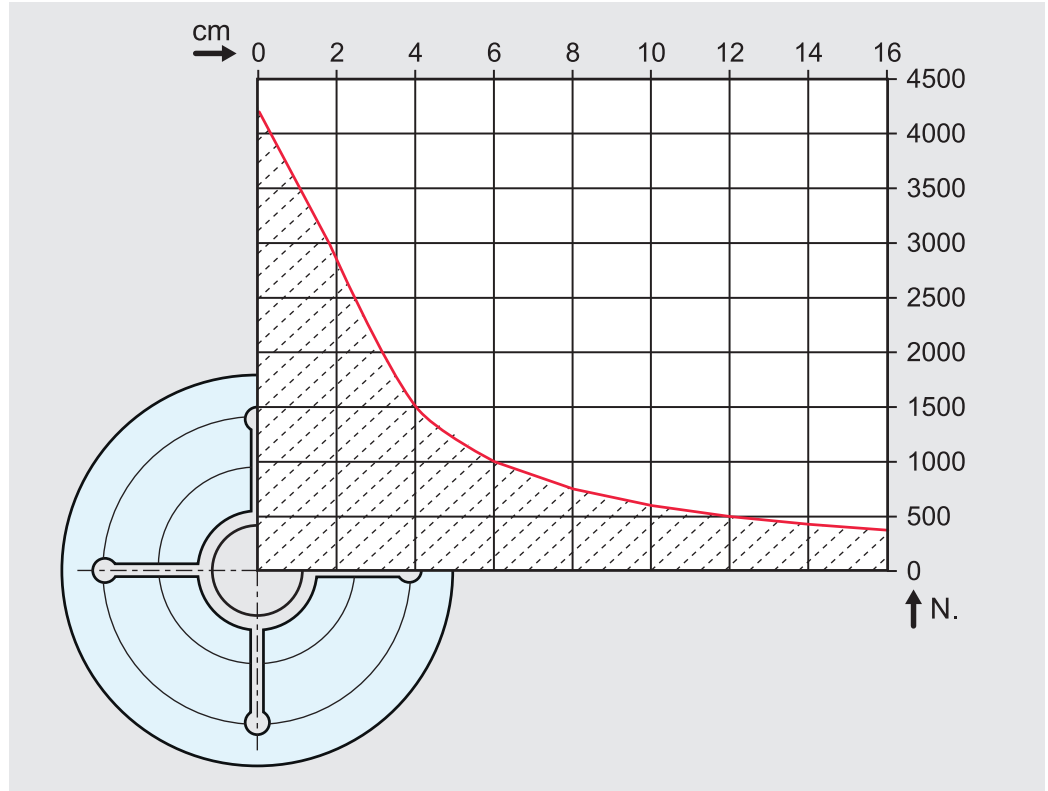
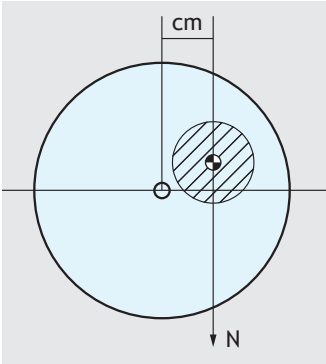
Welding methods

- MIG/MAG
- TIG
- Cable-TIG
- Plasma welding
- SAW

Air cooling, duty cycle 300A /100%

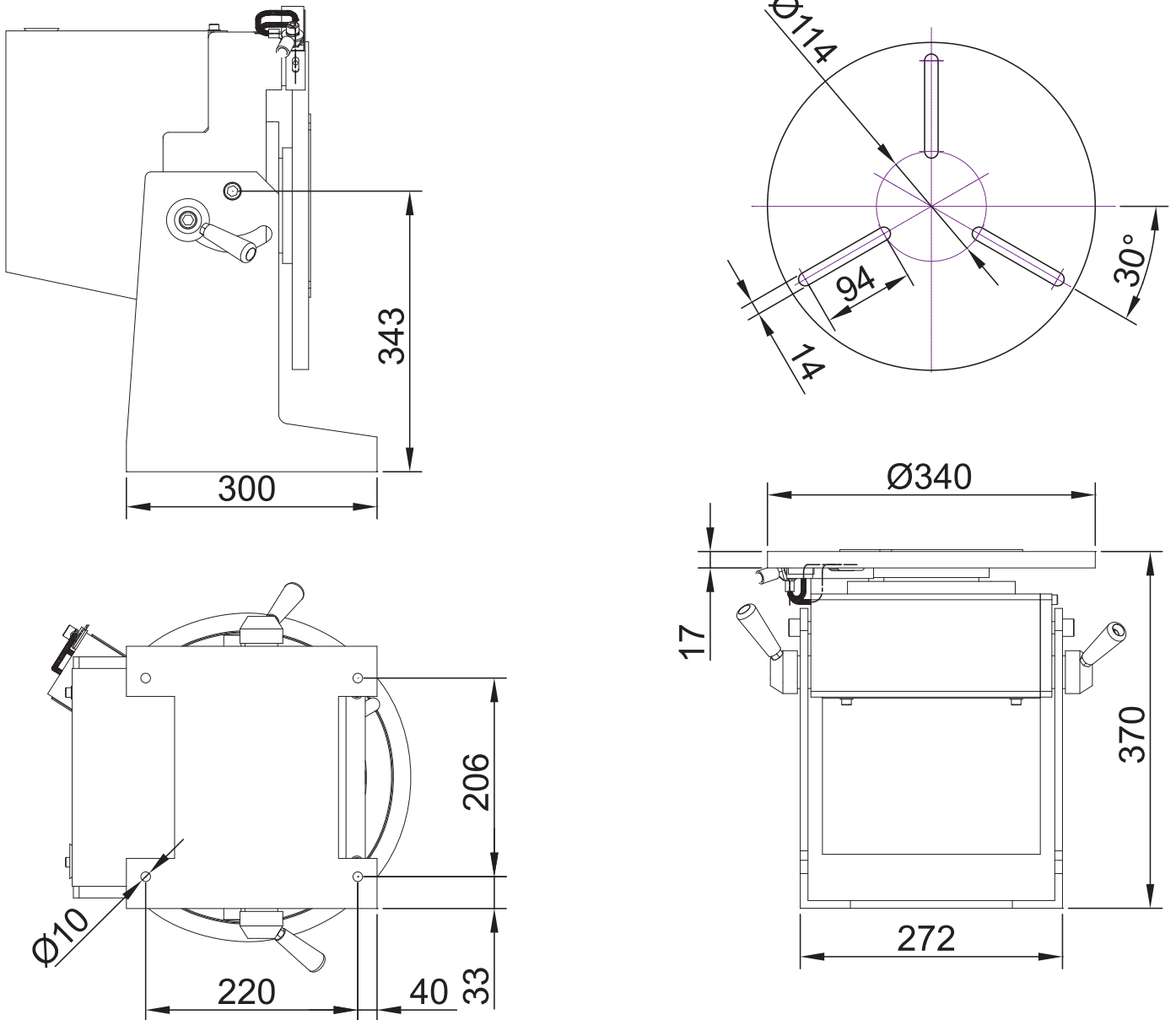
Welding positioner PRO 3

Load diagram



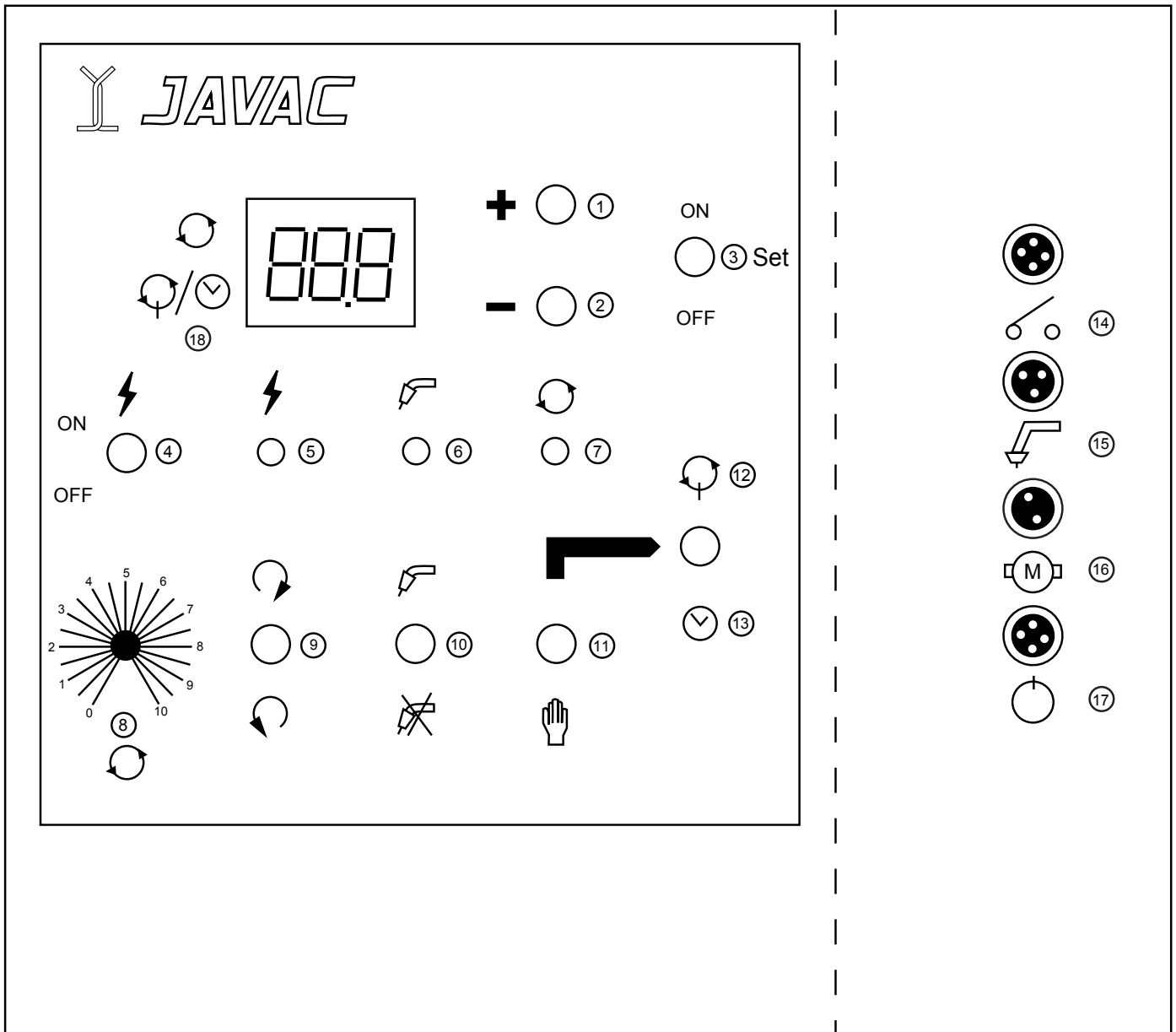
Welding positioner PRO 3

Size



Welding positioner PRO 3

Standard control COM 2800



- 1) Value setting (+), increase
- 2) Value setting (-), decrease
- 3) Timer ON/OFF
- 4) Power ON/OFF
- 5) Power LED (ON)
- 6) Welding LED (ON)

- 7) Turntable LED (ON)
- 8) Turning speed (rpm)
- 9) Turning direction cw/ccw
- 10) Welding start
- 11) Auto
- 12) Overlap welding
- 13) Timer

- 14) Foot switch socket (4p)
- 15) Torch socket (3p)
- 16) Table motor socket (2p)
- 17) Limit switch socket (4p)

- 18) Display
(Unit 0,1 sec)